

Connecting everyday life to a sustainable tomorrow

Environmental Vision 2040

September 30, 2025





Since our founding, we have pursued **urban and community development** together with local communities through urban development, including the development of public transportation. While the development of urban and community areas has an impact on the natural environment, we have continued to think over and take action on ways to reduce that impact and to develop a society in which people, towns and the environment are in harmony.

In 2022, Tokyu Corporation established **Environmental Vision 2030** based on the idea that it is necessary not only for individual companies and people to take action but also to change the lives of people by working closely with the many stakeholders who support us.

In the three years since Environmental Vision 2030 was established, we have searched for models for Towns in Harmony with the Environment to help solve global environmental issues. Multiple initiatives have been undertaken, so that we are now ahead of schedule in moving towards our objectives.

We are announcing that we have updated our objectives included in **Environmental Vision 2040** and are making progress based on the **Connecting everyday life to a sustainable tomorrow** concept.

All people have a responsibility to leave a brighter future for our children. The future will be the culmination of how we live our lives today. Let's work together on urban and community development in which everyone can contribute to a sustainable society and the revitalization of the local environment as part of our daily lives of living, play and work.





	1	The DNA of Our Environmental Initiatives	Page 3
	2	Positioning of Environmental Vision 2040	Page 4
	3	What We Aspire to with Our Environmental Initiatives	Page 5
	4	Concept for Towns in Harmony with the Environment	Page 6
	5	Image of a Town in Harmony with the Environment	Page 7
	6	Environmental Vision 2040 — Realizing Towns in Harmony With the Environment —	Page 8-9
	7	Action 11 (Decarbonization, Recycling-based Society)	Page 10-13
	8	Status of Major Initiatives in Urban and Community Development	Page 14-19
		#Reference Materials	Page 20-22



The DNA of Our Environmental Initiatives

- Since our founding, we have pursued **urban and community development** that treats public transportation and urban development as two halves of a whole, in order to create ideal living environments.
- In urban development, we have always placed importance on **harmony between people, towns, and environment**, and this is sustainable urban development that is in line with the current SDGs, which we are working on together with the local community and society.



In 1918, Den-en-toshi Company, the origin of Tokyu Corporation, was started under the leadership of Eiichi Shibusawa. He adopted a Japanese style of the **"Garden city" concept** of Ebenezer Howard (UK), and presented to the world **a style of verdant residential areas in the suburbs, from which people would commute into the city center by train.** He believed that "man could never live without nature," and his thoughts were carried on, to make improvements to housing shortages and the living environment in the Tokyo metropolitan area following the Second World War, in 1953 **a new urban concept** was announced, leading to the development of **the Tama Den-en-toshi area.**



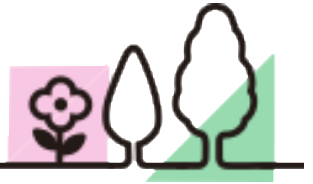
To make the Tama Den-en-toshi area a green town together with local residents, the slogan **"Greenery for the City and Dreams for the City"** was adopted. In 1972 the first "green sapling presents" started, and over forty years, around 220,000 saplings were distributed through the area. Since 2012, this spirit has been carried on in the form of "Mido * Link" ("green link") action, which aims to spread greenery through interpersonal connections. Community development support aimed at facilitating urban and community development as well as greening continues to this day.



In the early 1970s, water pollution in the Tama River had become a serious issue, stemming from a sharp increase in population density due to Japan's high economic growth period. In 1974, The Tokyu Foundation for Better Environment (currently the Tokyu Foundation) was established. The foundation provides grants to fund expert academic research as well as research and other activities closely linked with people's lives in the area. As of FY2024, the foundation had provided 1,332 such grants and contributed to the **environmental conservation of the Tama River.** By having the government and local residents joint forces, water quality in the Tama River has gradually improved, to the point where ayu (sweetfish) can now be seen swimming upstream.

Positioning of Environmental Vision 2040

- Based on our group slogan, "Toward a Beautiful Age," we strive to fulfill our mission to **create beautiful living environments**, and working to **solve social issues (SDGs, etc.) through urban and community development** based on our sustainable management policy.
- We have set Sustainable Development Goal No. 11, "Sustainable Cities and Communities," as the core goal to achieve through our business activities, and towards achieving it, we have formulated an environmental vision to further pursue **a decarbonization, recycling-based society**.



Group Slogan

Toward a Beautiful Age – Tokyu Group

Mission Statement

We shall strive to create beautiful living environments, in which each person can pursue individual happiness in a harmonious society.

Sustainable Management Policy

Under the group slogan "Toward a Beautiful Age," we are committed to creating a beautiful living environment for our future and continuous solution of social issues through business by addressing material sustainability themes.

Material Sustainability Themes (Materiality):
 Safety & Security, Urban and Community Development, Quality of Living Environment, HR Development, Decarbonization and Recycling-based Society, Corporate Governance & Compliance

SUSTAINABLE DEVELOPMENT GOALS



What We Aspire to with Our Environmental Initiatives

- By working to shape towns that are in harmony with the environment as the embodiment of sustainable urban and community development, we promote sustainable growth together with towns and communities.
- We will also contribute to solving global issues by disseminating our good practices established in existing cities.



Realizing Towns in Harmony With the Environment

To create sustainable cities and communities, we will work to realize towns in harmony with the environment toward a decarbonation and recycling-based society, and grow sustainably together with the towns.

Improving the sustainability of the cities/Enhancement of area value

Reinvestment

Increase in corporate value

Long-Term Recycling-based Business Model

Helping to Solve Global Issues

We will contribute to solving global issues by disseminating good practices in existing urban areas to reduce environmental impact and harmonize with the environment.

TOD: Transit-Oriented Development

Area-wide initiatives

Forming communities
Collaboration with partners

Developing Examples of Good Practices

Leveraging the characteristics of our business, which is related to public transportation as well as urban and lifestyle infrastructure, we coordinate with customers and other partners in pursuit of sustainable urban and community development that achieves harmony with the environment.



Concept

Connecting everyday life to a sustainable tomorrow



The past, present and future are linked, and the future will be the culmination of how we live our lives today.

Aspirations



We aim for everyone to lead daily lives in which they can choose environmentally-friendly activities without a particular sense of burden.

Our actions and the existence of towns can inspire a future full of expectations.





Connecting everyday life to a sustainable tomorrow

Scenes of Daily Life

Move



- CO₂-free mobility
- Efficient and seamless mobility
- Resource recycling centered around eco-friendly train stations

Live Play



- Easy eco-friendly and ethical lifestyles
- Energy-creating, low environmental impact homes
- Eco-friendly and smart communities
- Conservation of the natural environment and education

Work



- Environmentally friendly offices
- Open innovation

Support for daily life



- Digital technologies
- Preparing for and responding to natural disasters
- Energy resilience



Key Points of Realization

1

Set **challenge targets**

2

Tackle the targets in **partnership** with all stakeholders

3

Provide **services that support** environmentally friendly **behavioral changes**



Realizing Towns in Harmony with the Environment — Comfortable, Sustainable Cities and Communities



Our initiatives

We will take steps to achieve a decarbonized, recycling-based society and a nature positive future in line with national and international standards.



Initiatives Aimed at Towns

We will introduce cooperative initiatives that cannot be achieved by our company alone and require broader participation of people in communities.



Towns in Harmony with the Environment

We will realize Towns in Harmony with the Environment on a global scale by applying our knowledge on the subject and the best practices in urban and community development in countries overseas.



Targets of Our Initiatives

- Greenhouse gas (GHG) emissions reduction targets (in comparison with FY2019), renewable energy targets*

	FY2030	FY2035	FY2040	2050
GHG emissions (Scope 1,2)	55% reduction	60% reduction	73% reduction	Net zero
Renewable energy ratio	60% or higher	70% or higher	80% or higher	100% (RE100)
GHG emissions (Scope 3)	35% reduction	45% reduction	55% reduction	-

- Waste volume and water usage reduction targets (in comparison with FY2019 on a revenue unit basis)

	FY2030	FY2035	FY2040
Waste volume / water usage	20% reduction	25% reduction	30% reduction



Initiatives Targets Aimed at Towns

To grow continuously with communities, we will promote cooperative initiatives using criteria that help increase the environmental awareness of local residents as monitoring indicators.

Mirai Action Toward a Beautiful Age	Monitor and disclose progress on the “Mirai Action Toward a Beautiful Age” indicators
GHG avoided emissions by Tokyu railways	Monitor and disclose progress on the total reduction of GHG avoided emissions from Tokyu Railways
“Mido * Link (green link)” action	<ul style="list-style-type: none"> Monitor and disclose the total number of support organizations Monitor and disclose the number of participants



Initiatives Targets Aimed at Towns

Example initiatives

Mirai Action Toward a Beautiful Age*1

We will take sustainable action by working with people who live in the areas served by Tokyu's railway lines and in business areas to go beyond the SDGs for a brighter future.

It is divided into five areas based on the concept: 'Connecting everyday life to a sustainable tomorrow'. Information on individual events will be shared accordingly.

Monitoring



- Monitor and disclose progress on the "Mirai Action Toward a Beautiful Age" indicators*2

Mirai
Action

Toward a beautiful Age



Mirai Action is composed of five concrete actions that have been chosen with the support of experts and in consideration of future progress on the Sustainable Development Goals (SDGs) after 2030 that are easy to participate in.

GHG avoided emissions by Tokyu railways

Generally, railways are more energy efficient. The CO₂ emissions from rail travel are about seven times less than from the equivalent car journey.*3 In FY2022, Tokyu Railways started to **operate all railway lines using electricity with net zero CO₂ emissions that is 100% derived from renewable energy**. We aim to promote a modal shift so that people will choose railways, an environmentally friendly means of transportation.

Monitoring



- Monitor and disclose progress on the total reduction of GHG avoided emissions from Tokyu Railways



All customers should be able to travel safely and pleasantly by train as this is the key to the modal shift. To encourage this shift, we are providing safe and secure train services, improving the comfort of stations and carriage environments, providing information that is easy to understand, and offering better, more valuable services.

"Mido * link" Action

The project evolved from **Tokyu Greening Campaign**, which began in 1972. Through it, we have distributed a total of 223,000 seedlings over 40 years. We support greening activities carried out by people who live in the areas served by Tokyu's railway lines as part of our urban and community development efforts because our ultimate aims are to enliven communities and conserve and improve local wildlife.

Monitoring



- Monitor and disclose the total number of support organizations
- Monitor and disclose the number of participants*4



Spice Up Sozai Junkan(Circulation) Lab.*5 We organize events that welcome the participation of people in the communities to find better uses for bamboo. We make bamboo charcoal and use it to improve soil, as well as make bamboo products.

*1 News release on Mirai Action Toward a Beautiful Age <https://www.tokyu.co.jp/company/news/detail/58986.html>

*2 Independent survey of the attitudes of people who live in the areas served by Tokyu's railway lines: Percentage of People Who are Committed to More Than Three of the Five Types of Action

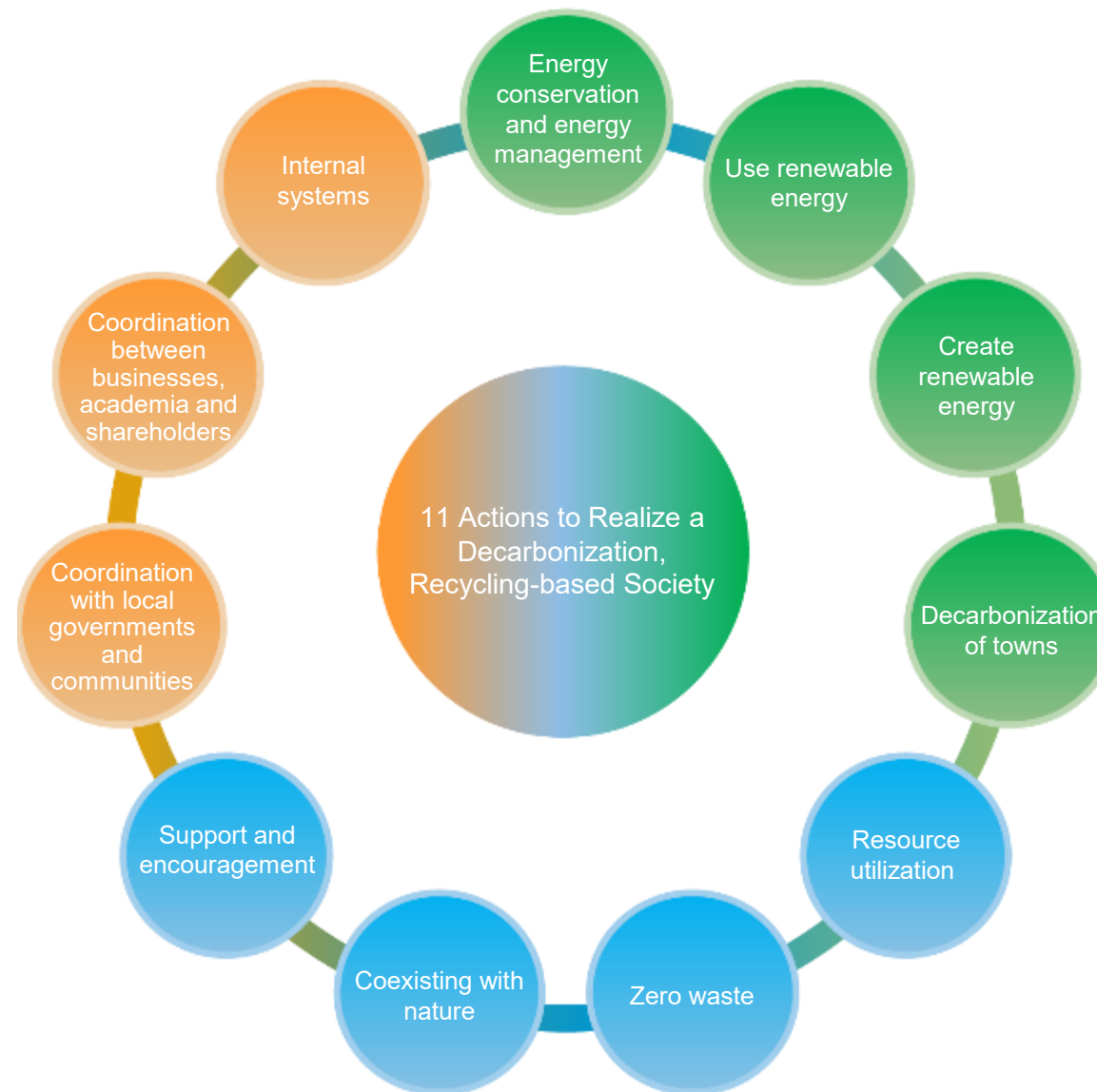
*3 Source: CO₂ emissions per passenger-kilometer, FY2023 on the website of the Ministry of Land, Infrastructure, Transport and Tourism

*4 Monitoring and disclosure of the number of participants will start in FY2026

*5 Examples of "Mido * link Action" support organizations



Towards realizing a decarbonization, recycling-based society, we have established 11 actions to achieve the targets of our initiatives





Energy conservation and energy management

We will reduce our energy usage through the introduction of development and equipment with a low environmental impact, the utilization of new technologies and energy management.

- Environmental certifications, vehicle upgrades, energy management systems, heating source cooperation between properties, and the promotion of electrification

Use renewable energy

With the aim of daily lives in which people can choose environmentally-friendly activities without a particular sense of burden, we will promote renewable energy operation on Tokyu lines and the use of renewable energy in the properties we own.

- Renewable energy operation on all Tokyu lines
- Use of renewable energy as a basic specification of newly constructed properties owned by the Company. Continuous use of effectively 100% renewable energy in common areas and areas used by the Company at existing properties*
- Promotion of the use of renewable energy by Tokyu Corporation and its consolidated subsidiaries

*Excluding hotels, residential properties, and some properties in which energy use is not managed by Tokyu Corporation. Applicable to entire buildings, including tenants' exclusive areas.

Create renewable energy

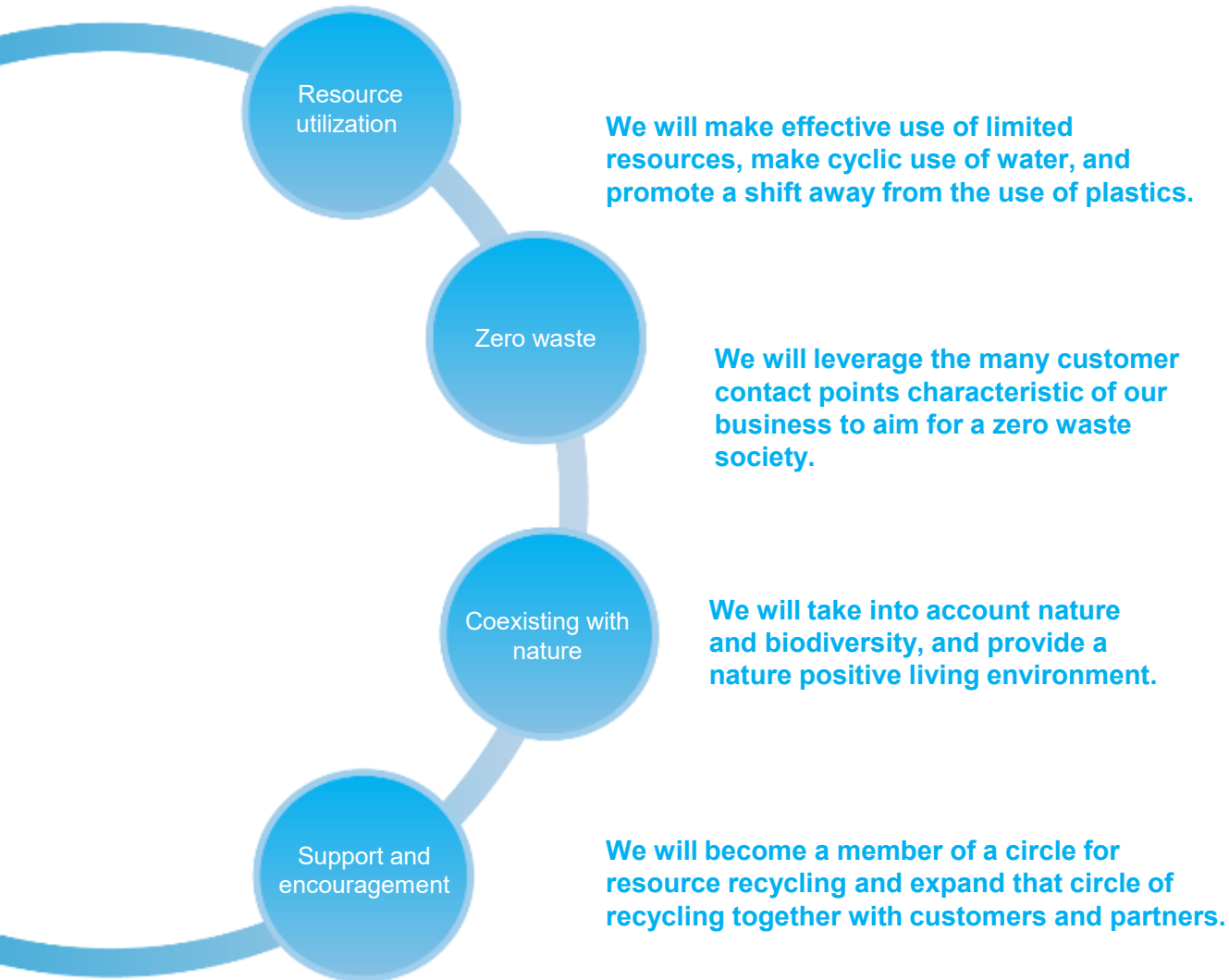
We will contribute to the stabilization of renewable energy procurement and the realization of a decarbonized society through energy creation initiatives.

- Development investment in renewable energy through an infrastructure fund, introduction of solar power generating equipment on the roofs or premises of Company facilities, expansion of renewable energy power plants to cater to Company demand

Decarbonization of towns

We will strive to ascertain and reduce GHG emissions through the supply chain of our businesses, and promote the decarbonization of towns by contributing to building distributed energy systems.

- Supply chain cooperation, coordination with local governments, CO2 free transportation, promotion of EV adoption
- Support for installation of solar power generation and storage battery equipment, adoption of energy storage systems to strengthen community resilience and make effective use of energy in a wide area



- Use of recycled or renewable materials, researched and development into recycled materials, extending the life of buildings, etc., use of wood materials
- Rainwater utilization, utilization of reclaimed water through new technologies, trial initiatives related to the water cycle
- Use of substitute materials and promotion of recycling to shift away from the use of plastics

- Reduce: Revise excessive production and supply and reduce food losses
- Reuse: Promotion of reuse, sharing services, renovations, recycling platforms for unneeded items
- Recycle: Recycling of waste, chemical recycling of PET bottles
- Promotion of resource utilization to reduce waste (waste to resource initiatives), conversion of waste into energy resources

- Preservation of nature and biodiversity, forest rehabilitation, green infrastructure, discussion of blue carbon initiatives
- Environmental assessments, acquisition of environmental certifications, sustainability-minded material procurement and product sales

- Expanding the handling of environmentally certified products, promoting ethical consumption
- Monitoring and disclosure of reduced GHG avoided emissions from Tokyu Railways
- Awareness raising activities, "Mido * Link (green link)" action



Coordination
with local
governments
and
communities

We will coordinate with local governments and regions to form communities that contribute to the environment.

- nexus concept, Next-generation suburban development, Shibuya Area Management Council
- Environmental education for children, support for the promotion of local cooperation (apps, etc.), community-based activities of Tokyu associations in Japan and overseas
- Research grants, support for environmental activities and environmental awareness-raising activities related to the Tama River Basin through the Tokyu Foundation

Coordination
between
businesses,
academia and
shareholders

We will solve issues and promote open innovation through collaboration with companies, academic institutions and other entities.

- Joint research, demonstration testing, open innovation
- Raising of funds to promote sustainability
 - Issuance of sustainability bonds, utilization of sustainability link loans
- Dissemination of ESG information, engagement with shareholders and investors

Internal
systems

We will establish solid management and governance systems and continually educate the employees responsible for urban and community development.

- Environmental vision, environmental policy, environmental strategy
- Organizational structure of management, internal carbon pricing
- Employee education, commendation system (Tokyu Group Environmental and Social Contribution Awards)

Status of Major Initiatives in Urban and Community Development

This section introduces the main initiatives in **urban and community development** being pursued as part of the 11 Actions to realize a decarbonization, recycling-based society.

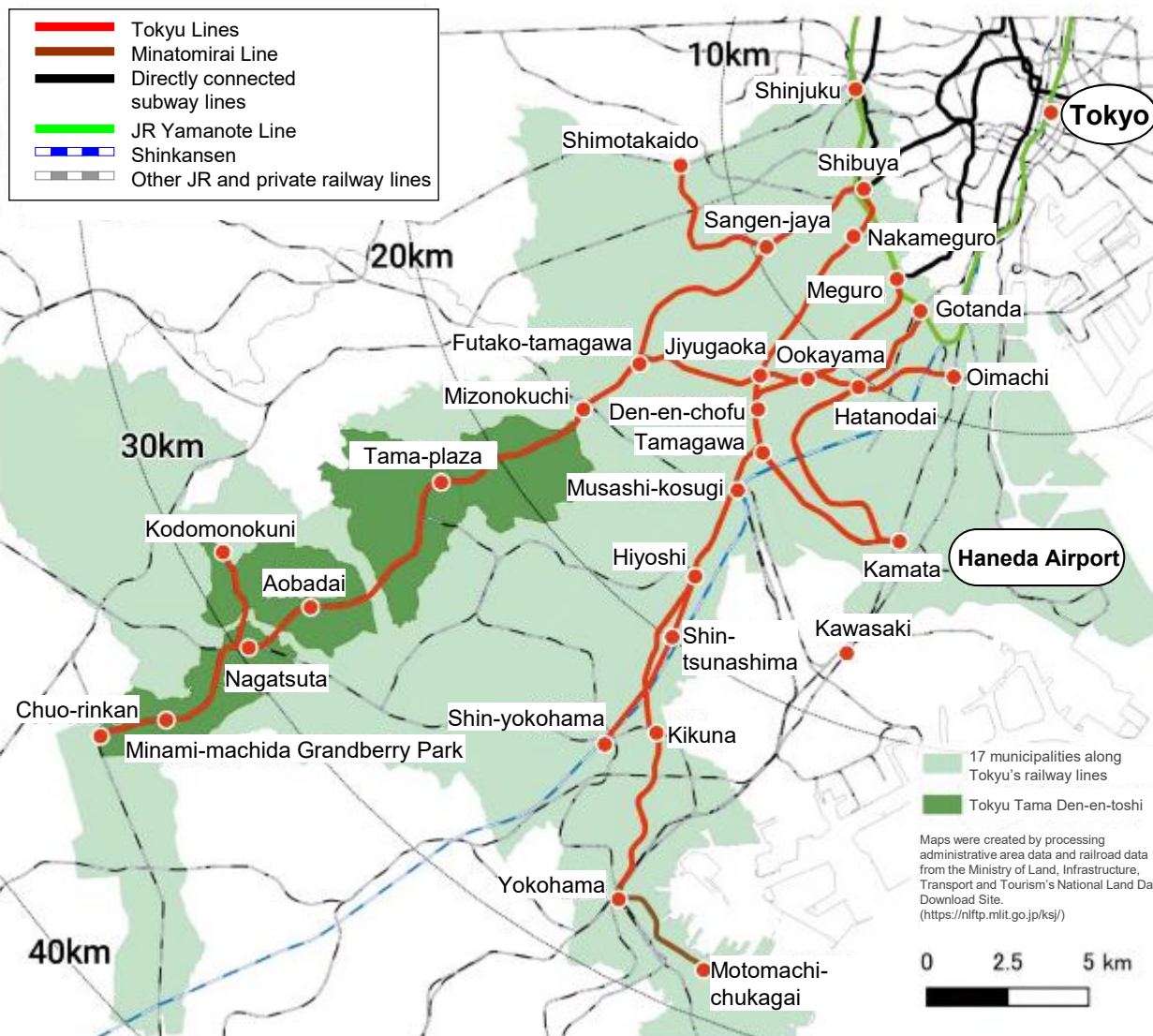


1 Shibuya

2 Futako-tamagawa

3 Tama Den-en-toshi area

4 Minami-machida Grandberry Park



5 Initiatives based on train stations and transportation that connect towns

6 Initiatives in and outside areas served by Tokyu's railway lines (domestic)

7 Overseas

8 Tokyu Group



1 Shibuya



SHIBUYA AXSH

(The entire building has received ZEB Oriented certification, and the office areas received ZEB Ready certification.)



"Shibuya Hiryou" project originating from SHIBUYA QWS

Measure to adapt to climate change

- Measures to deal with rainwater during torrential rains
(Construction of a rainwater harvesting facility at the east exit of Shibuya Station*, installing watertight panels to prevent water from entering the station entrances)

* Developed as joint construction contractor with the Urban Renaissance Agency as part of the Shibuya Station Area Land Readjustment Project.

Energy conservation, effective utilization of energy

- Integrated natural ventilation of Shibuya Hikarie and Shibuya Station, radiative cooling of Shibuya Station, office floor nighttime ventilation
- Active acquisition of environmental certifications (e.g., CASBEE, ZEB and other international certifications)
- Achievement of 100% renewable electricity use at large properties

Energy management

- Heating source cooperation between buildings, including heat storage systems
- Considering the introduction of VPPs* and new technologies

* Virtual Power Plant

Promotion of open innovation

- Tokyu Alliance Platform*
- Co-creation facility "SHIBUYA QWS"
- Support for the formation of an innovation ecosystem

* Open innovation promotion program working on overall areas served by Tokyu's railway lines, with a focus on Shibuya

Rehabilitation of the Shibuya River · coexisting with nature

- Rehabilitation of the Shibuya River mainly through "wall fountains" (water features) that utilize water from restored clear streams through public-private partnerships
- Development of biotopes along the Shibuya River
- Development of open spaces, and creating green spaces through wall and roof greening



2 Futako-tamagawa



* LEED (Leadership in Energy and Environmental Design): An environmental performance rating index administered by the U.S. Green Building Council.
The system aims to encourage the widespread adoption of sustainable buildings with superior energy efficiency.



Area management

- Community-wide, long-term urban and community development through public-private partnership
- Activities that help preserve the waterside environment of Tama River and increase water safety awareness



Preparation of spawning beds for native fish



Cleanup of children's wildlife observation location



Cleanup of piers to remove graffiti and encourage their better use

Futako-Tamagawa Rise (Preservation of the abundant natural environment and ecosystem)

- Tower office gold certified in the LEED* NC (new construction category) ratings
- Gold certified in the LEED ND (Neighborhood Development category) ratings (a world first)
- Highest AAA ranking in JHEP certification that rates biodiversity
- Use of renewable energy from power plant owned by Setagaya Ward

Town management*

- Community formation to foster links between local residents, workers and businesses

* The management entities of the five blocks that make up Futako-Tamagawa Rise have formed the Futako-Tamagawa Rise Council and engage in town management activities. Tokyu Corporation was appointed by the Futako-Tamagawa Rise Council as the manager of the overall parts under management.

Status of Major Initiatives in Urban and Community Development



3

Tama Den-en-toshi area

Next-generation suburban development

- Comprehensive agreement concluded with the city of Yokohama (2012~)
- Promoted rehabilitation of existing town areas in suburban residential areas through cooperation between industry, academia, government and the private sector
- Opening of Mobility Stations* equipped with solar power generating equipment, electric vehicle chargers and public bicycles



Tama-plaza Mirai Mobility Station

* A joint project involving the city of Yokohama and Tokyu Bus Corporation

The nexus concept originating from the Aoba area

- Demonstration testing and commercialization, including "agriculture and food," "resource recycling," "energy" and "MaaS for areas far from stations"



[nexus Challenge Park]
A sharing-oriented community farm, cleanup activities initiated by members, and the installation of a common box.



Demonstration of perovskite solar cells
An agreement was concluded between Toin Gakuen, Tokyu and Tokyu Railways to ensure mutual cooperation focused on education and energy. Demonstration experiments, etc. were implemented at train stations.



Resource recycling through building utilization

- Consultations regarding vacant homes through collaboration with Concierge of residence and living, local governments and communities
- Building renovations

4

Minami-machida Grandberry Park

A new town where stations, commercial facilities, and parks are integrated

- We received the Grand Prize of the Global Environmental Awards at the 31st Global Environment Awards.
- Station building gold certified in the LEED NC (New Construction category) ratings (a first for a station building in Japan)
- Zoning application area of roughly 15 hectares gold certified in the LEED ND (Neighborhood Development category) ratings



[Minami-machida Grandberry Park Station]
Recognized for utilization of rainwater as flushing water for passenger toilets, rainwater drainage plan through the installation of large volume rainwater storage tanks, introduction of LED lighting, and achieving an approx. 70% recycling rate for waste materials generated during construction.



[Area-wide landscape design utilizing green infrastructure]
Instead of artificial objects such as concrete, the power and functions of the natural environment from things such as stone, soil and greenery are utilized as the infrastructure that supports daily life.

Proposing a long-term cycle for living and towns

- Environmentally friendly condominium with fixed-term leasehold interest



[DRESSER Tower Minami-machida Grandberry Park]
Apartment complex with a direct connection to the station completed in January 2024. In addition to employing 100% renewable electricity, a carbon neutral lifestyle is proposed with the adoption of a solar tracking and lighting system, along with high-speed electric vehicle chargers, and a car sharing system.

Strengthened collaboration with local governments

- Conclusion of environmental agreement with the city of Machida

An agreement was concluded on initiatives to be pursued, including measures to mitigate climate change, adapting to the impacts of climate change, biodiversity, waste reduction and effective utilization, and the promotion of environmental education and learning.



5 Initiatives based on train stations and transportation that connect towns

From a low environmental impact to CO₂ free public transportation

- Operations use 100% renewable energy on all Tokyu's railway lines and in stations*
* Electric power from renewable energy that achieves effectively zero CO₂ emissions
- Promotion of the acquisition of long-term renewable energy sources under a corporate PPA

Promoting rail use to help advance urban decarbonization

Energy conservation and energy management through the utilization of new technologies and other innovations

- Improved energy efficiency when making vehicle and equipment upgrades, introduction of LED lighting at train stations
- Consideration of high-efficiency energy management through station air conditioning equipment, etc.
- Use of surplus regenerative power* in stations
* Using the electric power generated when trains apply braking to accelerate other trains
- Introduction of commercial energy storage systems



Solar panels at Motosumiyoshi Station

Reduction of CO₂ emissions through the use of wood resources and CO₂ sequestration

- Renovation of the roof of the platform using wood
- Reutilization of used materials from old station buildings (station timber)
- Forming communities through local events that utilize station timber



Togoshiginza Station after renovation
"Tama Timber" cultivated and produced in the Tama region was utilized.

Shifting from fossil fuels to electric, promoting substitute sources of energy

- Support for biodiesel blend projects through industry-academia collaboration
- 100% renewable energy operation in branch offices
- Zero-carbon bus stops using solar energy from power plants owned by Setagaya Ward (locally sourced and consumed renewable energy)



Launch of a bus fueled with biodiesel



The Toward a Beautiful Age SDGs train



The 2020 series trains that have reduced electricity consumption by 50% compared with the previous models

Promoting zero waste utilizing the characteristics of train stations and transportation

- Waste reductions through the reuse of lost items
- Collection of empty plastic containers at stations
- Installation of vending machines designed to address food loss at stations
- Gasification chemical recycling of disposed uniforms (being studied)
- Recycling of used railway cables (research and development underway)
→ Accelerate cooperation with companies and enlarge the circle of activities



Collaboration with Book Off to re-use lost items disposed of once the retention period has elapsed

Vending machines that offer bread which has not yet exceeded the sell-by date but has to be disposed of were installed at Komazawa-daigaku Station and Nagahara Station to reduce food loss



Recycling boxes for Unilever's plastic containers were installed at Saginuma Station and Minami-machida Grandberry Park Station to encourage resource circulation

Environmental PR / Encouraging use

- PR for environmental measures
- Organization of hands-on environmental events
- Participation in Sasutomono Mori managed by LY Corporation, a new platform specializing in trees and woodlands



An environmental workshop



A poster publicizing renewable energy operations

Status of Major Initiatives in Urban and Community Development



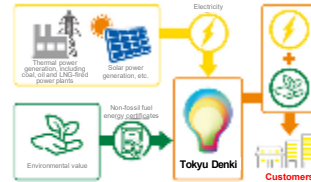
6

Initiatives in and outside areas served by Tokyu railway lines (domestic)

Green energy initiatives

Promotion of environmentally friendly energy creation and energy storage for the in-house production of procured electricity (energy self-sufficiency) and carbon neutrality

- Development of solar power plants and provision of electricity derived from renewable sources of energy
- Promotion of decarbonization measures for the airport management business



Promotion of carbon neutrality in areas served by Tokyu railway lines

- Tokyu Power Supply: Promotion of the use of 100% electricity derived from renewable sources of energy in homes in areas served by Tokyu railway lines
- Menu of support operations for EV users
- Installation service for solar power generating and storage equipment for homes
- Widespread adoption of ZEH-M, etc.



Proposing lifestyles with a low environmental impact

- Urban and community development where work, living and play are in close proximity, development of a walkable neighborhood
- Use of products made from plastic alternatives and proposing them to customers
- Reducing food loss and raising awareness about ethical



A dedicated environmentally friendly product corner



Use of straws made from wood and biomass



Activities of awareness-raising measures including reduction of food loss



Using a demand forecasting system to ensure proper inventory control



Green Cards / Green Coins

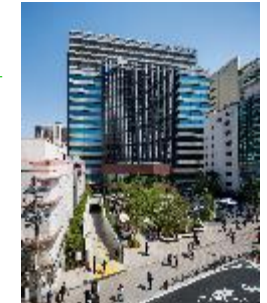


Introduction of electronic receipt systems

Achievement of 100% renewable electricity use at properties owned by the Company

- The shift to effectively 100%*2 electricity derived from renewable sources of energy at all rental properties owned by the Company*1 by FY2025 was completed one year ahead of schedule

*1 Excluding properties to be sold or demolished, hotels, residential properties, and some properties where energy use is not managed by Tokyu Corporation
*2 Applicable to entire buildings, including tenants' exclusive areas.



Shibuya Cast



Tokyu Capitol Tower

Provision of an app named common for local mutual aid

- Provision of an app designed to support communication between residents through information sharing and resource recycling. The app has many features. Users can post messages, give away belongings, consult other users and recommend destinations.
- An agreement was concluded with Setagaya Ward in June 2025 to encourage residents' participation and collaboration in urban and community development and enliven the community



A press release jointly released with Setagaya Ward



common box, a drop box for unwanted items

Organization and co-sponsoring of hands-on events

- Promotion of sustainability activities and frequent organization of hands-on events at commercial facilities by TMD Corporation
- Participation in the joint GX SHIBUYA Fes eco festival co-created by SWITCH, elementary schools and businesses in Shibuya Ward to provide practical opportunities to learn about the environment



A poster publicizing an event at Tama-plaza Terrace



An event at Aobadai Tokyu Square

Tokyu Malls Development Sustainability Action

TMD Corporation Sustainability Action logo



Image of GX SHIBUYA FESTIVAL



7 Overseas

Binh Duong New City in Vietnam

- Hanging gardens, wall greening and lush green living environments (Condominium business)
- Promoting a modal shift
Working toward the decarbonization of transportation by promoting the modal shift from motorcycles and cars to public transportation, including fixed route buses whose environmental impact is reduced because they use compressed natural gas (CNG)
- Introduction of composting and aquaponics inside facilities (Commercial)
- Community-wide town cleanup activities



Panoramic View of the Binh Duong New City project



KAZE SHUTTLE fixed route bus

Yanchep District of Western Australia

- Urban development aimed at realizing a Clean Green Sustainable City*
* Focusing on six areas: agriculture, education, health, welfare, culture, local life and clean energy. Aim for development that creates a positive cycle for the local community, environment and sustainability using the synergistic effects of mutual collaboration.
- Y. hub: a hub for innovation and business creation
Encourage the community to be self-reliant and develop while reducing environmental impact through the creation of employment focusing on research, education and business



Panoramic View of the Yanchep District



Y. hub: a complex comprised of offices, research and educational facilities

8 Tokyu Group

Tokyu Group Environmental and Social Contribution Commendation System

- To promote activities that contribute to the environment and society throughout Tokyu Group, we continue to implement the Tokyu Group Environmental and Social Contribution Award, an award system. <https://tokyugroup.jp/csr/award>



Scene from the 7th award ceremony

One winner of the Tokyu Group Environmental and Social Contribution Award

- Aiming to reduce the incineration disposal of old uniforms to zero (Tokyu Railways)
Tokyu Railways is expected to reduce the CO₂ emissions which would have been generated if old uniforms were incinerated after being replaced with new uniforms by approximately 140 t. About 52 t of old uniforms have been upcycled and reused, with an ultimate target of cutting the incineration disposal of old uniforms to zero.

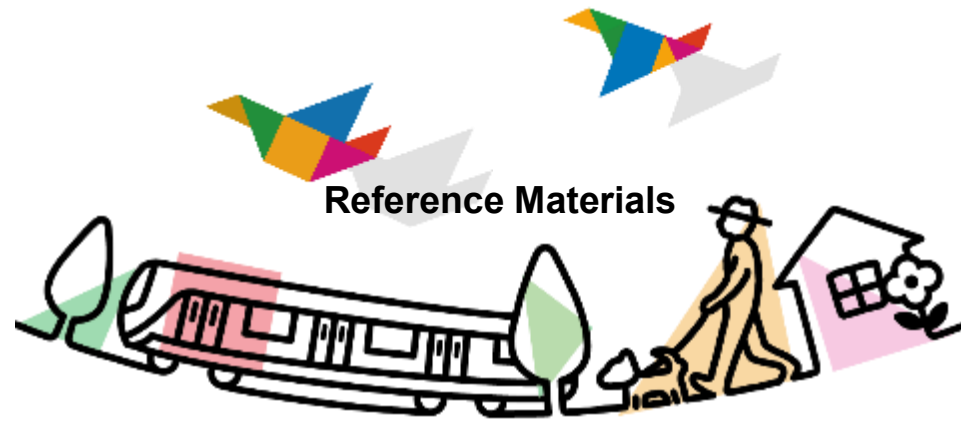


Tote bags made from old uniforms

- Activities to increase awareness of locally sourced and consumed renewable energy in the city of Kawasaki
A new local energy company, KAWASAKI MIRAI Energy Co., Ltd, was jointly established by the city of Kawasaki, NTT Anode Energy Corporation and local banking institutions. It supplies renewable energy to public and private facilities to support the local sourcing and consumption of electricity derived from biomass, a renewable source of energy.



A scheme for locally sourced and consumed renewable energy





Tokyu Group's Main Initiatives

Tokyu Fudosan Holdings Corporation



GROUP VISION2030



Environmental management policy



ReENE, the Renewable Energy Business of Tokyu Land Corporation

Tokyu Construction Co., Ltd.



Long-Term Management Plan "To zero, from zero"



Actively proposing net zero energy buildings



Introduction of low-carbon fuels, such as GTL and biofuels at construction sites



Further expansion of the energy storage business

Seikitokyu Kogyo Co., Ltd.



Integrated Report 2024



Paving to reduce rises in road surface temperatures



Development of products utilizing recycled materials



Main Environmental Initiatives and Results

Major Awards Received (Results of Initiatives)

1989	Oct.	Tokyu Tama Den-en-toshi receives the Prime Minister's Award as part of the Green City Awards administered by the Organization for Landscape and Urban Green Infrastructure.
2001	Oct.	Received Award for Distinguished Service in Urban Greening from the Ministry of Land, Infrastructure, Transport and Tourism in recognition achievements from the Green Present greening campaign.
2003	Apr.	Inukura Land Readjustment Project wins Award of the Minister of the Environment in the 12th Global Environment Awards organized by the Fujisankei Communications Group.
2004	Jun.	Received Kanto District Transport Bureau's Commendation for Meritorious Service in Environmental Conservation from the director of the bureau.
2006	Dec.	Minister's Commendation for Excellent Transportation-Related Environmental Preservation Businesses received from the Ministry of Land, Infrastructure, Transport and Tourism.
2008	Jul.	Tokyu Hospital receives Environment Award of Tokyo Metropolitan Government.
2009	Apr.	Eco-friendly projects including new Shibuya Station receives Award of the Minister of Land, Infrastructure, Transport and Tourism in the 18th Global Environment Awards organized by the Fujisankei Communications Group.
	Nov.	Award received in the TEAM COOLBIZ category from the Cool Biz Promotion Council in recognition of the Cool Biz Train.
2010	Oct.	Den-en-toshi Line Tama Plaza Station receives Association Grand Prize from the Association of Railway Architects.
2011	Feb.	TokyuWelina Ookayama wins Grand Prize in the Other Major Facility Category of the Energy-Efficient Lighting Design Awards 2010 organized by Ministry of the Environment.
2012	Feb.	Futako-Tamagawa Rise Shopping Center wins Grand Prize in the Commercial Facilities and Accommodations category of the Energy-Efficient Lighting Design Awards 2011 organized by Ministry of the Environment.
2013	Jan.	Shibuya Hikarie ShinQs wins Grand Prize in the Commercial Facilities and Accommodations category of the Energy-Efficient Lighting Design Awards 2012 organized by Ministry of the Environment.
2016	Apr.	Futako-Tamagawa Rise wins the Grand Prize of the Global Environmental Awards at the 25th Global Environment Awards organized by the Fujisankei Communications Group.
2017	Mar.	Ikegami Line Togoshi-Ginza Station wins Grande Prize in the 20th Wood Utilization Competition organized by the Ministry of Agriculture, Forestry and Fisheries and other organizations.
2020	Feb.	Setagaya Line Zero CO2 Emission Initiative wins Environment Minister's Award as an outstanding environmentally friendly transportation initiative in the 11th EST Transport Environment Awards organized by the EST Promotion Committee and Foundation for Promoting Personal Mobility and Ecological Transportation.
	Oct.	Minami-machida Grandberry Park wins the 40th Green City Award (Minister of Land, Infrastructure, Transport and Tourism Award) and the 8th Platinum Vision Award (New Era Town Development Award).
	Nov.	Kawasaki King Skyfront Tokyu REI Hotel of Tokyu Hotels Co., Ltd. is the first hotel of its kind in Japan to achieve zero-carbon operations by having 100% of the electricity used being derived from renewable sources of energy. It wins the Grand Prize at the 9th Smart Lifestyle Awards organized by the city of Kawasaki
2021	Mar.	SDGs train 2020 Toward a Beautiful Age Train operated by Tokyu Railways (100% renewable energy operations featuring initiatives for a sustainable society.) wins the Governor of Tokyo Award (Category 4: train exterior ads) at the 12th Tokyo Outdoor Advertising Competition organized by the Tokyo Outdoor Advertising Association
	Dec.	Minami-machida Grandberry Park wins the award of excellence at the Civil Engineering Design Prize 2021 organized by the Landscape & Design Committee
2022	Feb.	Hatanodai Station on Tokyu Ikegami Line, which was built using Tama Timber, wins the award of excellence at the Wood City TOKYO Model Architecture Awards organized by the Tokyo Metropolitan Government
2023	Jun.	Minami-machida Grandberry Park wins the Grand Prize of the Global Environmental Awards at the 31st Global Environmental Awards organized by the Fujisankei Communications Group.
	Dec.	All of Tokyu's railway lines operated using 100% renewable energy win the Minister of the Environment Award for Climate Action (Mitigation of GHG Emissions through Introduction and Proactive Use of Innovative Technologies category) at the Minister of the Environment Awards organized by the Ministry of the Environment